



# Cadherin-7 Polyclonal Antibody

<b>Catalog No</b>	YP-Ab-16935
<b>Isotype</b>	IgG
<b>Reactivity</b>	Human;Mouse;Rat
<b>Applications</b>	WB;IHC;IF;ELISA
<b>Gene Name</b>	CDH7
<b>Protein Name</b>	Cadherin-7
<b>Immunogen</b>	The antiserum was produced against synthesized peptide derived from human CDH7. AA range:651-700
<b>Specificity</b>	Cadherin-7 Polyclonal Antibody detects endogenous levels of Cadherin-7 protein.
<b>Formulation</b>	Liquid in PBS containing 50% glycerol, 0.5% BSA and 0.02% sodium azide.
<b>Source</b>	Polyclonal, Rabbit,IgG
<b>Purification</b>	The antibody was affinity-purified from rabbit antiserum by affinity-chromatography using epitope-specific immunogen.
<b>Dilution</b>	Western Blot: 1/500 - 1/2000. Immunohistochemistry: 1/100 - 1/300. Immunofluorescence: 1/200 - 1/1000. ELISA: 1/20000. Not yet tested in other applications.
<b>Concentration</b>	1 mg/ml
<b>Purity</b>	≥90%
<b>Storage Stability</b>	-20°C/1 year
<b>Synonyms</b>	CDH7; CDH7L1; Cadherin-7
<b>Observed Band</b>	87kD
<b>Cell Pathway</b>	Cell membrane; Single-pass type I membrane protein.
<b>Tissue Specificity</b>	Brain,
<b>Function</b>	function:Cadherins are calcium dependent cell adhesion proteins. They preferentially interact with themselves in a homophilic manner in connecting cells; cadherins may thus contribute to the sorting of heterogeneous cell types.,similarity:Contains 5 cadherin domains.,
<b>Background</b>	This gene encodes a type II classical cadherin of the cadherin superfamily. Alternative splicing results in multiple transcript variants, at least one of which encodes a preproprotein that is proteolytically processed to generate the mature glycoprotein. This calcium dependent cell-cell adhesion molecule is comprised of five extracellular cadherin repeats, a transmembrane region and a highly conserved cytoplasmic tail. Type II (atypical) cadherins are defined based on their lack of a histidine-alanine-valine (HAV) cell adhesion recognition sequence specific to type I cadherins. Cadherins mediate cell-cell binding in a homophilic manner, contributing to the sorting of heterogeneous cell types. Mutations in this



gene may be associated with bipolar disease in human patients. This gene is present in a gene cluster on chromosome 18. [provided by RefSeq, May 2016],

**matters needing attention**

Avoid repeated freezing and thawing!

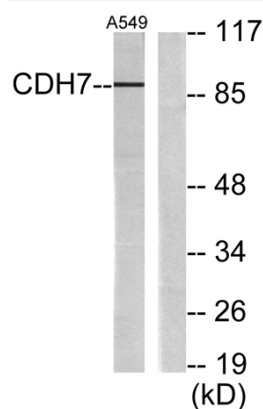
**Usage suggestions**

This product can be used in immunological reaction related experiments. For more information, please consult technical personnel.

**Products Images**



Western Blot analysis of various cells using Cadherin-7 Polyclonal Antibody diluted at 1:1000



Western blot analysis of lysates from A549 cells, using CDH7 Antibody. The lane on the right is blocked with the synthesized peptide.